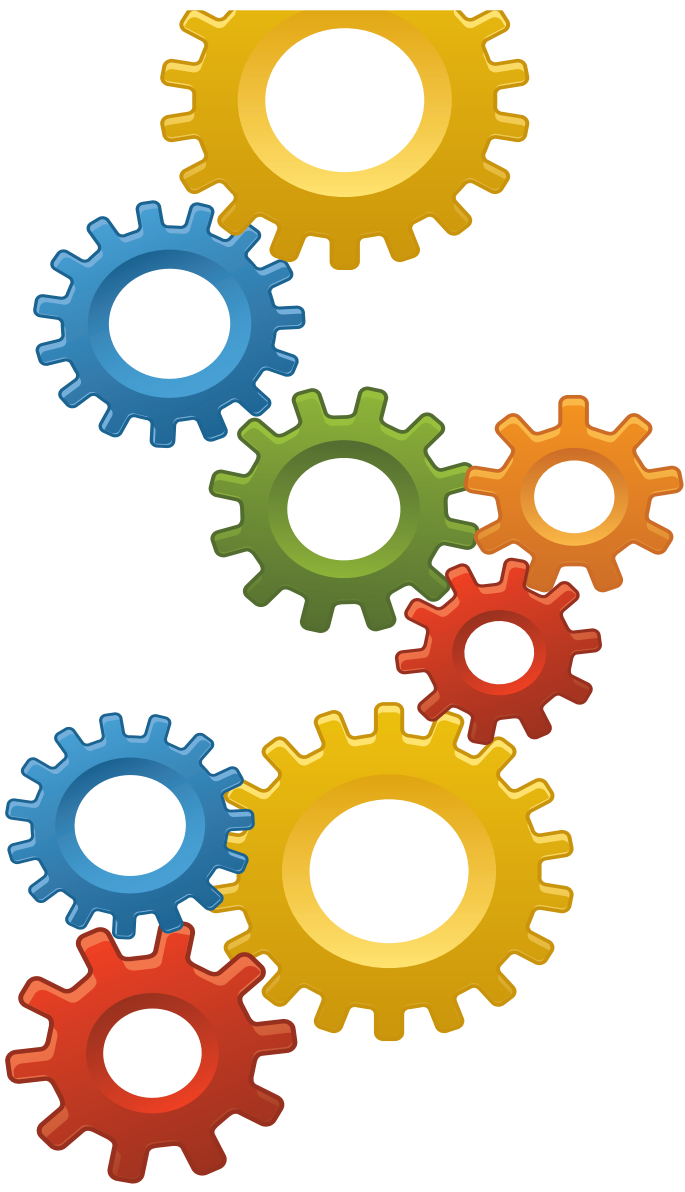




IPM
CLOUD

THE HOSTED
PROJECT MANAGEMENT SOLUTION



IPM **CLOUD** is a hosted project management solution that delivers 360 real-time view of projects, job tasks and operations – combined with extensive reporting and back end financial information.

Powered by Microsoft Dynamics® to deliver extensive document and contract management features, IPM **CLOUD** is also supported by native integration with Microsoft Office® including Outlook®.

CERTIFIED FOR



The logo for ipm Global, with "ipm" in a dark blue circle and "Global" in a light blue sans-serif font.

BUILDING PROJECT MANAGEMENT SOFTWARE
FOR PROJECT MANAGERS

IPM CLOUD

IPM Cloud is a hosted Project Management Solution developed to meet the needs of the construction, engineering and project based industries. IPM CLOUD delivers a 360 real-time view of projects, job tasks and operations – combined with extensive reporting and back end financial information.

Seamlessly integrating mail and calendar services, IPM puts project management squarely where project staff spend most of their time inside their MS Outlook® inbox. IPM Cloud delivers the Document Control, Contract Control, Resource Management, Planning and Forecasting all from within a single environment without the need for expensive infrastructure.

BENEFITS OF IPM CLOUD

- Affordable monthly payment options
- Low setup costs
- Automated backups ensure the integrity of your data
- No file server infrastructure investment required
- Automatic software upgrades and patches
- Access IPM data on site from any computer - all you need is an internet connection

INFORMATION ACCESS

Today's workers need to access data in an ever-increasing variety of places and situations. IPM uses the Microsoft Dynamics® framework to let users access their data anytime, anywhere, and on the device of their choosing. As a completely hosted application, IPM can access real-time information whenever you are online.

LOW COST

IPM Cloud enables businesses of any size to experience the benefits and functionality of IPM Project Management at an affordable monthly fee. By hosting IPM in the cloud, you have low initial setup fees and a low risk short term commitment that doesn't tie up company resources.

DATA SECURITY

The hosted nature of IPM Cloud ensures that no server infrastructure is required and implementation times are a fraction of other project management software options. Users will have the peace of mind that their data is automatically backed up on a daily basis and unlike other hosted solutions, data is owned by you, the client, not the host provider.

IPM CLOUD FEATURES

GENERAL FEATURES	DOCUMENT CONTROL		VARIATION CONTROL	PROCUREMENT	RESOURCE MANAGEMENT	PLANNING AND FORECASTING	DAILY REPORTS
Workflow Automation	RFI's	Risk Register	Variation Request Control	RFQ	Timesheet Approvals	Forecast to complete	Incident Tracking
Browser Based	Submittals	Issues Register	Variations	Purchase Orders	Payroll file creation	Percent Complete	Visitor Tracking
Outlook	Drawing Register	Defects	Progress Billing	Subcontracts	Charge Rate Tables	Task Based Gantt Chart	Progress Tracking
Automated Email Filing	Transmittals	Job Check list	Budget Management	Subcontract Variations	Resource Timesheet Processing	Resource Scheduling	Material Receipts
Offline Availability	Site Instructions	Notice of Delay	Multi-currency	Multi-currency		Service Booking	Subcontractor Attendance
Opportunity Management Integration	Meeting Minutes	Extensions of Time	Approval Workflows with email integration	Purchase Approval Workflows with email integration	Material's handling	Subcontract Based Gantt Chart	Utilisation for Equipment
	Site Diary						Day Labor Utilisation
				Subcontract Approval Workflows with Email Integration			Weather Conditions Tracking

TAKE CONTROL OF YOUR PROJECT ENVIRONMENT:

- Effectively manage job scheduling, resource allocation and task management to deliver successful projects on time and on budget.
- Mitigate risk by always knowing the status of tasks.
- Manage Subcontracts and Purchase Orders
- Manage Head contract, Contract Variations and Progress Billing
- Review critical KPIs through the IPM Job Progress view.
- Collaborate with other project team members to accurately forecast project status

PRODUCTIVITY GAINS

IPM provides a set of productivity tools for added value. These include personal workflows, automatic to-do notifications, accessibility features, capability to quickly build custom reports, and seamless integration with Microsoft Outlook®.

At IPM Global, we believe that the success of an implementation begins with the end user. Ensuring that the platform provides an interface consistent to what is already used is essential to meeting our goals – and your expectations.

MS OUTLOOK® ENVIRONMENT

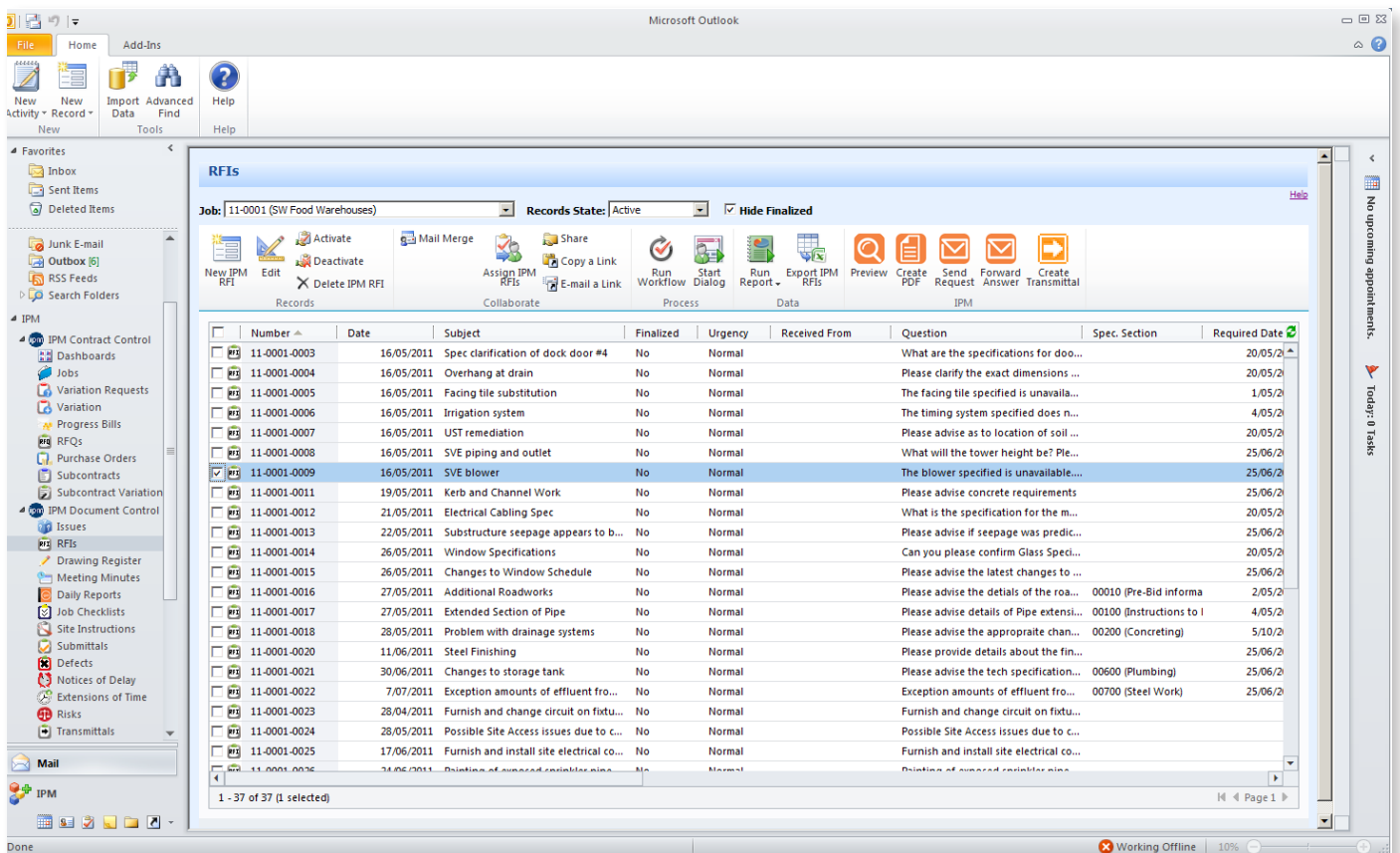
The entire project team will be comfortable using IPM – in fact, they already know how to use it because it is run from inside Microsoft Outlook®.

Integration with Microsoft Outlook® lets users remain within a familiar environment that is both flexible and easy to use. Multicurrency and multilingual capabilities ensure that the solution supports international business, and can be personalised to meet the needs of any office.

DATA MANAGEMENT

Our database architecture allows users to easily store, manage and access relevant documents needed to track and analyse project performance.

IPM uses the powerful Microsoft SQL Server® database engine, with reporting features that enable key performance indicators to be assessed and reviewed continually throughout the project. Contact and project data can be categorised to ensure that the relationship between jobs and contractors remains clear and visible.



IPM CLOUD operates within Microsoft Outlook® which allows users to stay within a familiar and easy to use environment.



ipm Global Australia

TEL.+617 3102 3390

FAX. +617 3852 1227

EMAIL. info@ipmglobal.net

TWITTER: [@ipmglobal](https://twitter.com/ipmglobal)

WEBSITE: www.ipmglobal.net

